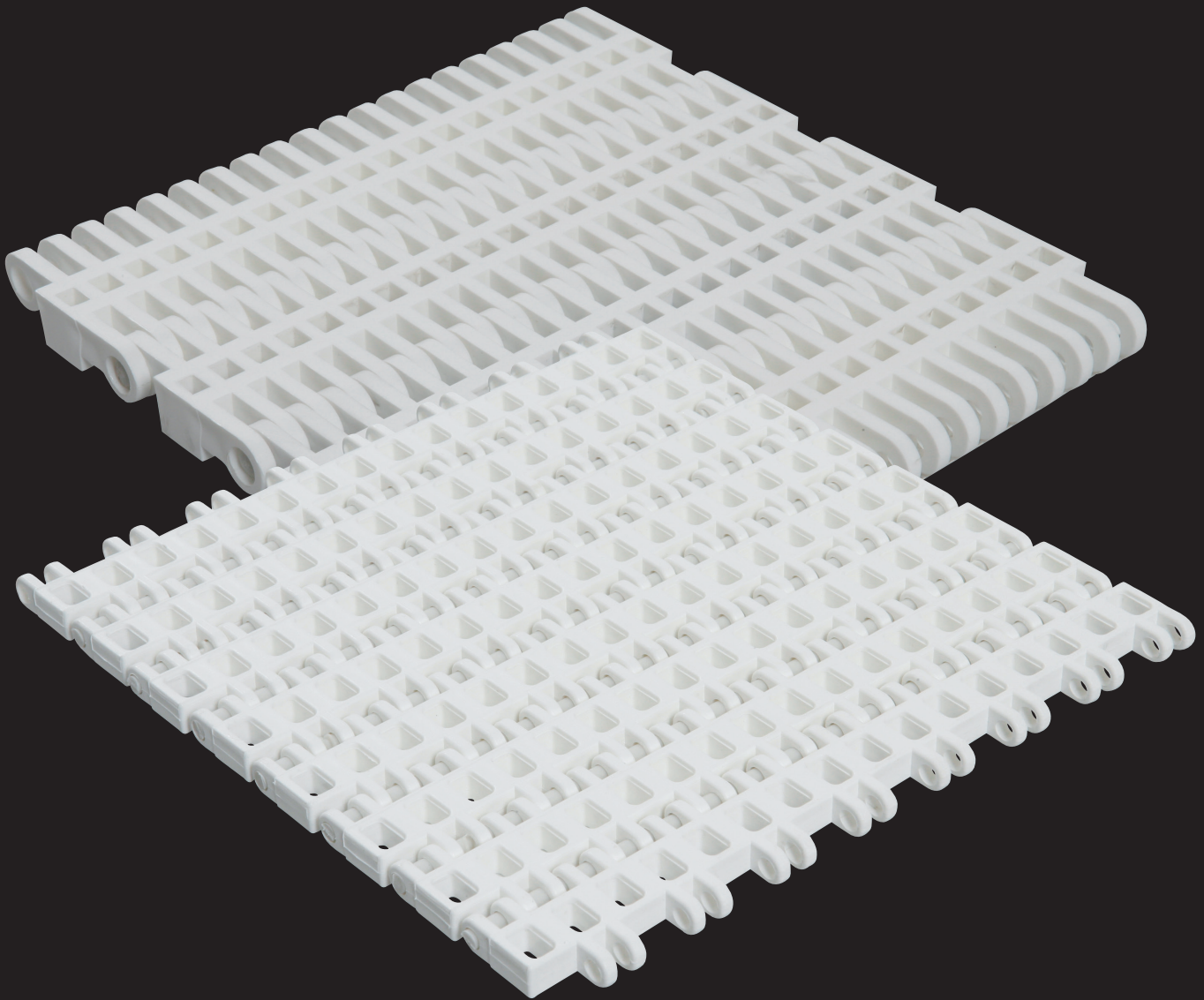


MODULAR BELTS



SCANBELT
...keeping industry moving...



► ScanBelt's first spiral installation from 1988

SCANBELT - KEEPING INDUSTRY MOVING

Modular belts

FLEXIBILITY ABOVE ALL

ScanBelt is one of the world's leading manufacturers of modular plastic conveyor belts with more than 25 years of experience in the market.

ScanBelt has the largest and most flexible programme on the market. We currently have more than 50 different belt types available and can therefore offer the ultimate solution to special tasks of any sort. We service a wide range of areas from bakeries to heavy-duty automotive industries.

The entire process from design and tool making to plastic moulding and assembling of whole belts all takes place at the same location at our head office in Hjoerring, Denmark, making us extremely flexible. In addition to this, we have an extensive network of distributors worldwide with local assembly on every continent. Think global - act local!

SCANBELT
...keeping industry moving...

BRANCH OFFICES

- ScanBelt Germany
- ScanBelt Norway
- ScanBelt UK

WORLDWIDE DISTRIBUTOR NETWORK

- Africa
- Americas
- Asia
- Europe
- Oceania

For your local distributor, please go to www.scanbelt.com

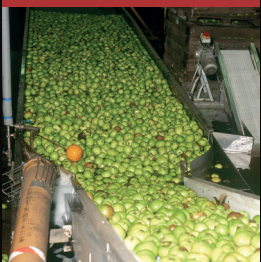
SCANBELT
— nordic —

SCANBELT NORDIC

Chains, bearings & conveyor components

For more information go to www.scanbeltnordic.com

FRUITS & VEGETABLES



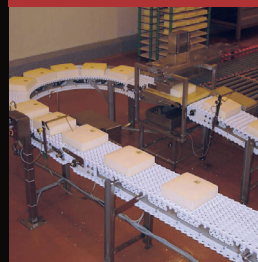
AUTOMOTIVE



BAKERY



DAIRY



PASTA



MATERIAL & PACKING



BOTTLING & CANNING



MEAT & POULTRY



SEAFOOD



OTHER

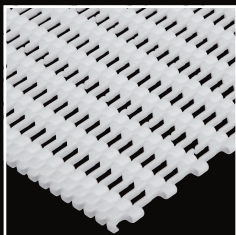


S.06

A true MICRO-PITCH with a 6,25 mm pitch. Designed for light transport. It is able to go around a 7 mm diameter nose bar for very tight transfers. This series is assembled without rods.

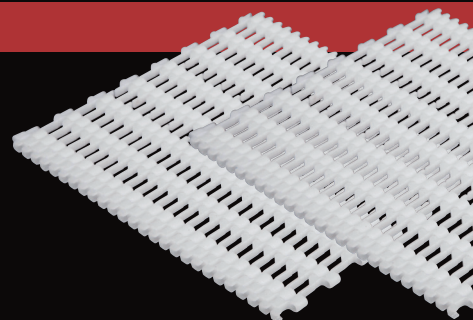
S.06-401

EASY TO CLEAN



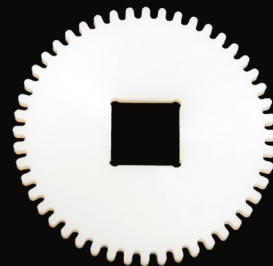
06-401 Open flat top. For extremely small transfers. EASY TO CLEAN

- Smallest pitch in the market
- Runs on static nose bars down to 6 mm
- Easy to clean
- Positively driven - no tracking issues
- No frayed belt edges



ACCESSORIES

FOR TECHNICAL DETAILS PLEASE VISIT:
WWW.SCANBELT.COM

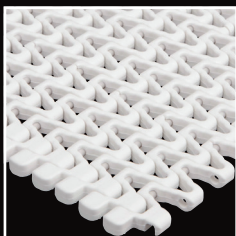


S.12

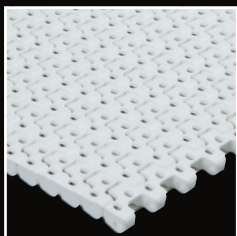
A true MINI-PITCH with a 12,5 mm pitch. Designed for light transport. It is able to go around a 14 mm nose bar for very tight transfers. Placement of sprockets is flexible across the belt width, i.e. no risk of assembling or installation mistakes. The links are designed with open rod access and are consequently very easy to clean. The belts can be delivered with flights and rubber top surface.

S.12-401/406/408/408F/438/448

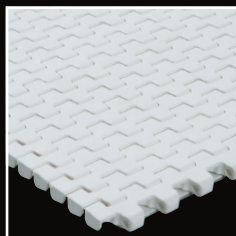
EASY TO CLEAN



12-401 Very open with curved surface. Max airflow for cooling. EASY TO CLEAN

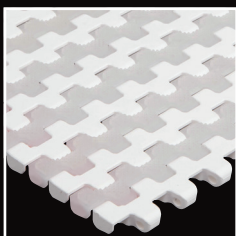
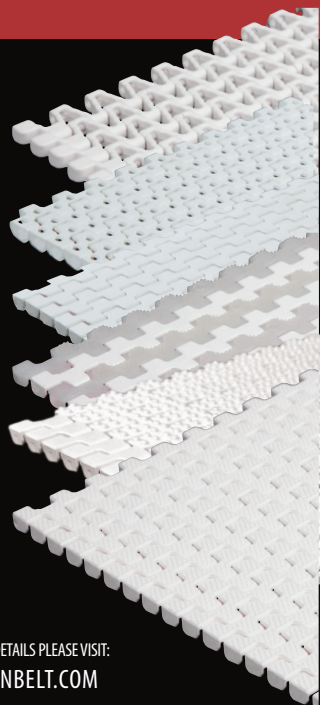


12-406 Open belt for light drainage. Light transport requiring drainage and small transfer. EASY TO CLEAN

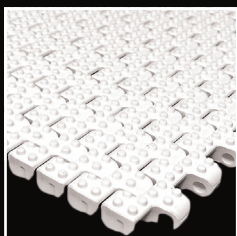


12-408 Flat top closed surface. Light transport, small transfer. EASY TO CLEAN

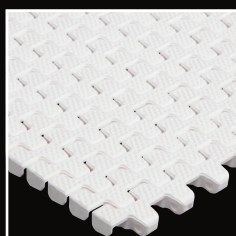
- Suitable for tight transfers and small pitch sprockets
- Runs on nose bars down to 14 mm
- Easy to clean
- Bakery and shellfish industry for cooling/freezing, dairy production
- Available with ScanBelt's unique, revolutionary self-lock, one piece rod retention system



12-408F Closed friction top surface. Transport on slightly inclined conveyors. EASY TO CLEAN



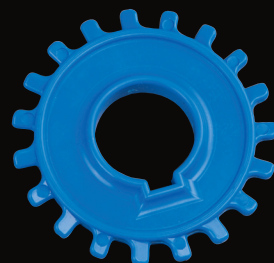
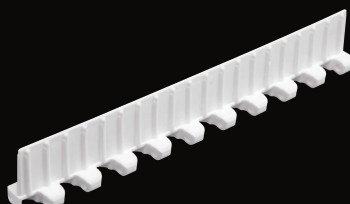
12-438 Closed 2 mm nub top surface for minimum contact. EASY TO CLEAN for poultry, meat and seafood.



12-448 Closed top with an inverted diamond pattern. Proofing belt for raw dough. EASY TO CLEAN

ACCESSORIES

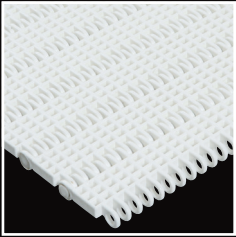
FOR TECHNICAL DETAILS PLEASE VISIT:
WWW.SCANBELT.COM



S.25

The S.25 is a range of 25 mm pitch belts designed to solve all aspects of light to medium transport. The series consists of 17 belt types with distinct characteristics when it comes to open area and surface structure. Closed and open belts with smooth or structure surface. Raised ribs and rubber surface. Belts with very good cleanability for meat and poultry industry. An effective drive system with side guiding and an excellent grip in the belt. Fully bi-directional sprockets for reversible conveyors.

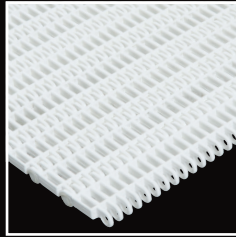
S.25-100/600/700



25-100 Type of drain/filter belts. Very small openings.

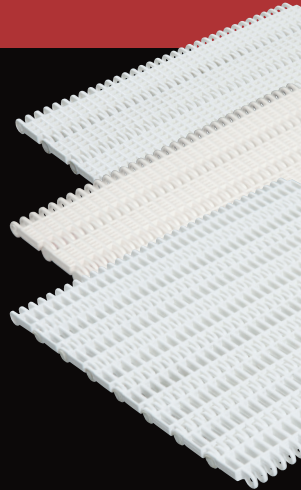


25-600 Type of drain/filter belts. Very small openings.



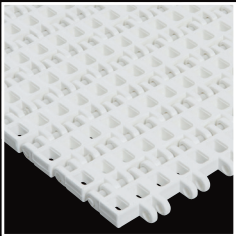
25-700 Open drain belt with smooth surface. For cooling/freezing.

- Very even water flow and airflow for cooling and horizontal freezing through the belt
- Rounded ribs for very smooth sideward transfers
- Light products, such as snack foods and sweets, pasta industry for cooking and drying

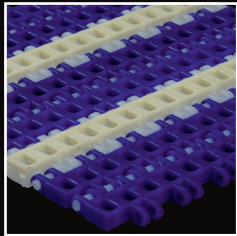


S.25-400/400F/402/411

EASY TO CLEAN

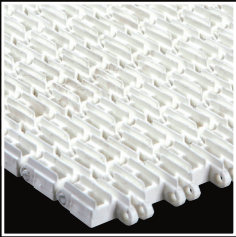
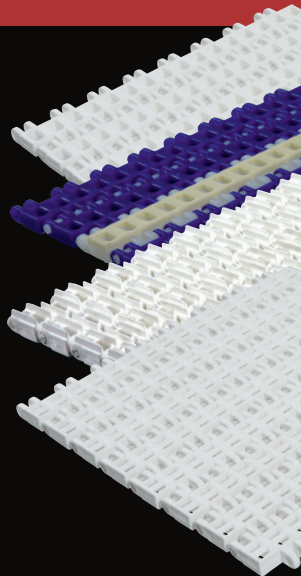


25-400 Open belt with smooth surface for cooling and drainage. EASY TO CLEAN

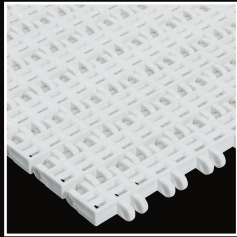


25-400F Open friction top surface for packed goods on slight inclines. EASY TO CLEAN

- The open 25 mm pitch alternative for medium-heavy duty general purposes
- Dairy industry, shellfish, bakery sector. Rubber top surfaces for handling of packed products on inclines
- Efficient sprocket engagement, due to its large contact surface between teeth and belt
- Comes with a variety of surfaces, including flat, net-like, curved, rubber top surfaces



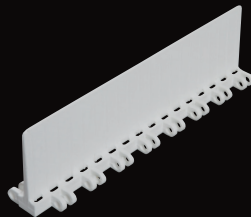
25-402 Raised ribs for minimum product contact. Air circulation under product. EASY TO CLEAN



25-411 Open belt with curved surface for minimum product contact. EASY TO CLEAN

ACCESSORIES

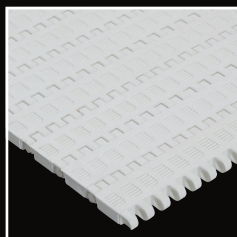
FOR TECHNICAL DETAILS PLEASE VISIT:
WWW.SCANBELT.COM



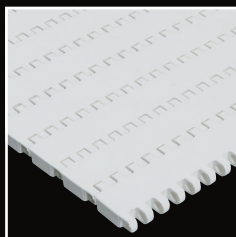
S.25

The S.25 is a range of 25 mm pitch belts designed to solve all aspects of light to medium transport. The series consists of 17 belt types with distinct characteristics when it comes to open area and surface structure. Closed and open belts with smooth or structure surface. Raised ribs and rubber surface. Belts with very good cleanability for meat and poultry industry. An effective drive system with side guiding and an excellent grip in the belt. Fully bi-directional sprockets for reversible conveyors.

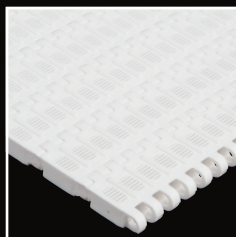
S.25-406/408/413/418/420



25-406 Perforated surface with 1 mm opening for draining of small products.



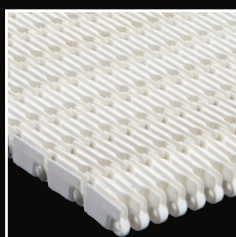
25-408 Flat top closed surface. General light transportation.



25-413 Perforated surface with 1 x 6 mm openings. 1,2 mm longitudinal flights to "lift" products.



25-418 Closed top with an diamond pattern.

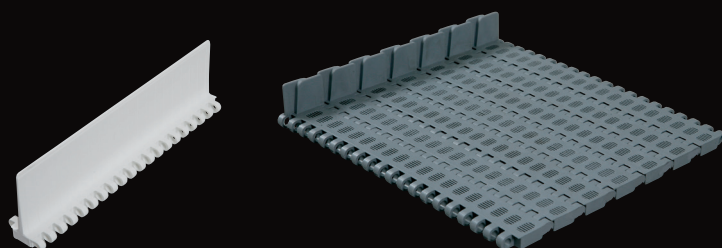


25-420 Raised rib surface. For small transfers in bottling and canning industry.

- The 25 mm pitch closed top alternative for medium-heavy duty purposes needing special surfaces
- Narrow draining opening for minimizing product waste (406), mini-flight top (413)
- Option of moulded-in side guards in various heights (408, 413)
- Raised ribs that limit the contact surface between the belt and the product (420)
- Bottling and canning industry, pasta and shellfish industry (cooking, blanching)
- Available with ScanBelt's unique, revolutionary self-lock, one piece rod retention system

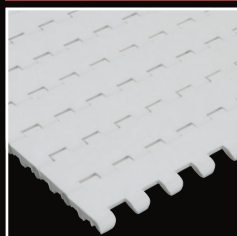
FOR TECHNICAL DETAILS PLEASE VISIT:
WWW.SCANBELT.COM

ACCESSORIES

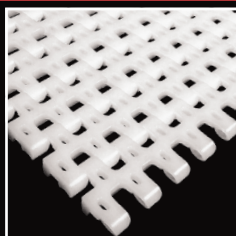


S.25-800/801/806/808F/830/836

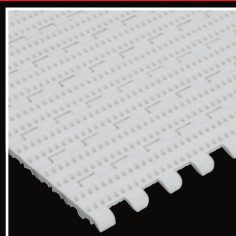
EASY TO CLEAN



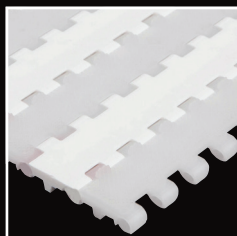
25-800 Flat top closed surface EASY TO CLEAN for general food applications.



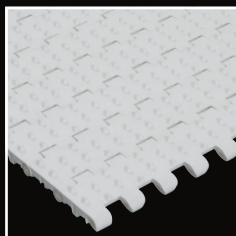
25-801 Open surface for drainage. EASY TO CLEAN for seafood industry and other food applications requiring drainage.



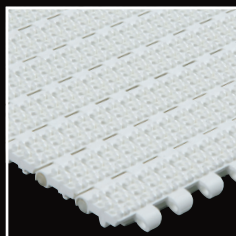
25-806 Perforated flat top surface EASY TO CLEAN food applications requiring light drainage.



25-808F Closed friction top surface. Transport on slightly inclined conveyors. EASY TO CLEAN



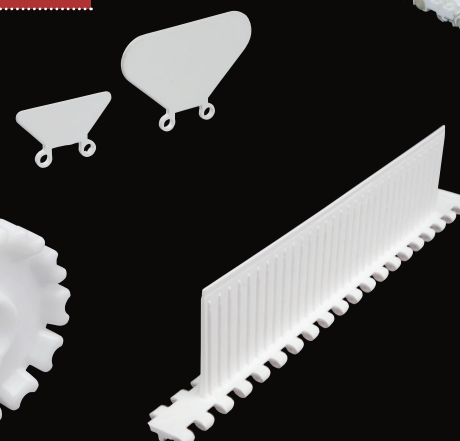
25-830 Closed cone top surface EASY TO CLEAN for frozen products and positioning for small inclines.



25-836 Perforated nub top surface for light drainage and minimum contact. EASY TO CLEAN for sweets/ sticky products.

ACCESSORIES

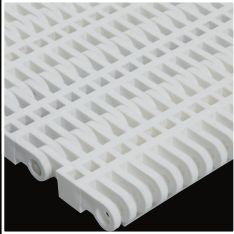
- The 25 mm "EASY TO CLEAN" series for super high degree of cleanability
- Even lines on the back side ensure uninterrupted flow of cleaning fluids
- Conical link design maximizes the access for cleaning around the hinge area
- Light to medium transport of smaller products in the red meat, poultry and fish industry
- Large variety of surfaces, including flat, perforated flat top and different cone top patterns
- Available with ScanBelt's unique, revolutionary self-lock, one piece rod retention system



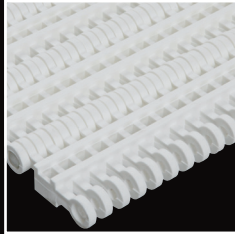
S.50

The S.50 series is a range of 50 mm belts designed for medium to heavy transport. The series consists of 19 types of belts with different surface structures and openings. A complete range of easy to clean belts for high hygiene applications. Rubber surface and different nub top structures for good product grip. Extensive number of accessories, such as flights, side guards, line modules and hold downs etc.. Effective sprocket systems with side guiding. Fully bi-directional sprockets for reversing belts. The series contains a vast span of pulling forces from light cooling belts to solid heavy duty belts for car and pallet handling.

S.50-100/300

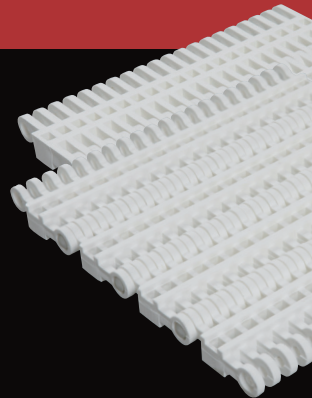
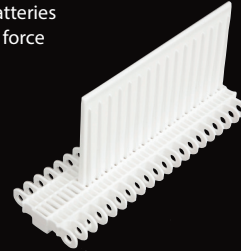


50-100 Open surface for drainage. Medium-heavy duty transport in general.



50-300 Light open grid surface for drainage. Lifts product and minimizes contact area.

- The open 50 mm alternative for medium-heavy duty general purposes
- Fishing industry: all parts of the process from gutting and trimming to scaling and packing
- Fruit and vegetable industry, glass industry, car batteries
- Excellent sprocket engagement for added pulling force
- Smooth, drained surface for heavy transport



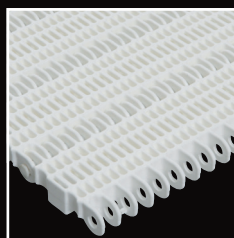
S.50-220



50-220 Raised ribs for transportation of unstable products. Bottle and can industry, including pasteurizers.

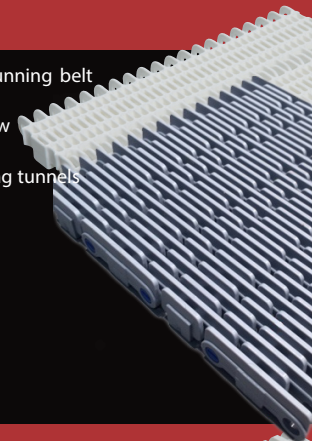
S.50-401

EASY TO CLEAN

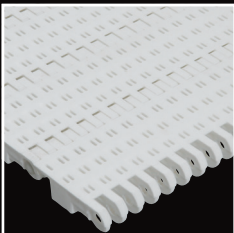


50-401 Very open surface. Max airflow for cooling/freezing.

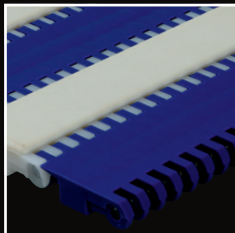
- Largest open area of any straight running belt in the market
- Extremely even water flow and airflow for cooling/freezing
- Designed for IQF Freezers and freezing tunnels
- Small single openings in the design



S.50-600/600F/602/606/608/610/630

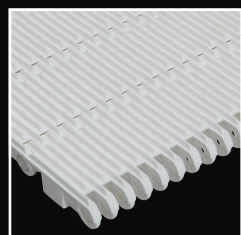


50-600 Perforated flat top for light drainage.

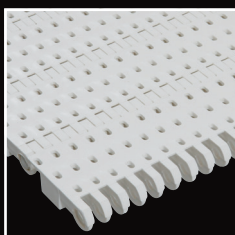


50-600F Closed friction top surface. Transport on slightly inclined conveyors.

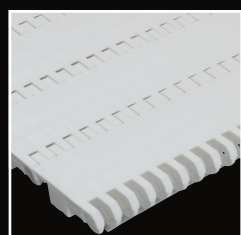
- Large variety of surfaces and openings, including friction top and mini ribs, both across and along the running direction
- Excellent sprocket engagement for added pulling force
- Dairy production, snack foods, grain, fishing, fruit and vegetable industry



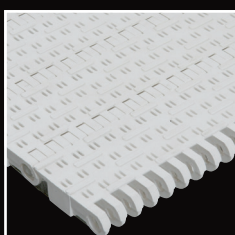
50-602 Flat top with 3 mm ribs. For handling sweets, vegetables and other small products.



50-606 Perforated flat top surface for handling dairy products, vegetables, snack foods etc.



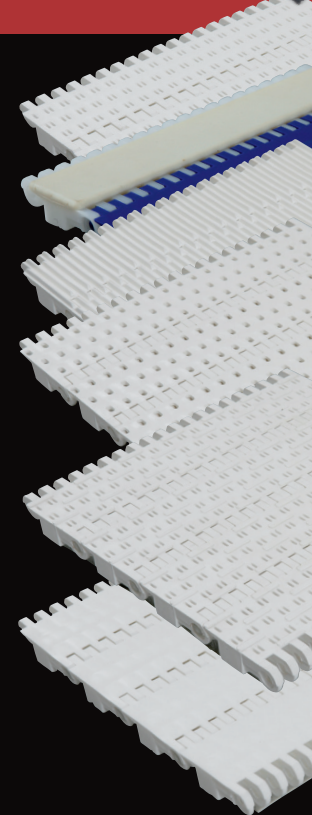
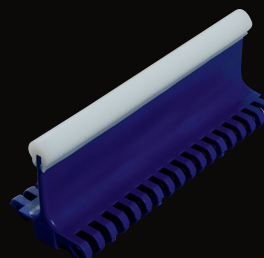
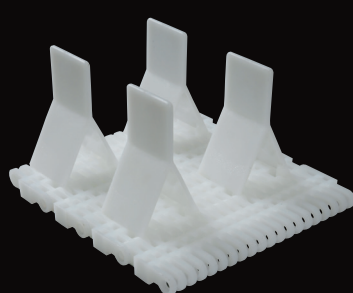
50-608 Flat top closed surface. General transportation.



50-610/630 1 mm to 3 mm staggered flight pattern top. Minimal contact.

ACCESSORIES

FOR TECHNICAL DETAILS PLEASE VISIT:
WWW.SCANBELT.COM

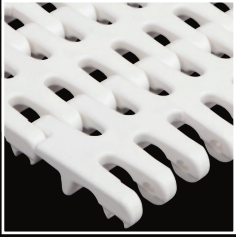


S.50

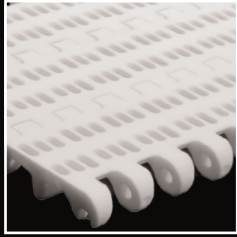
The S.50 series is a range of 50 mm belts designed for medium to heavy transport. The series consists of 19 types of belts with different surface structures and openings. A complete range of easy to clean belts for high hygiene applications. Rubber surface and different nub top structures for good product grip. Extensive number of accessories, such as flights, side guards, line modules and hold downs etc.. Effective sprocket systems with side guiding. Fully bi-directional sprockets for reversing belts. The series contains a vast span of pulling forces from light cooling belts to solid heavy duty belts for car and pallet handling.

S.50-801/805/806/808/808F/808 FlexiTop/830/838

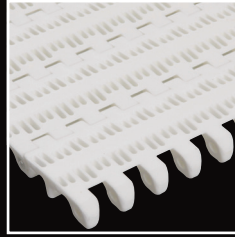
EASY TO CLEAN



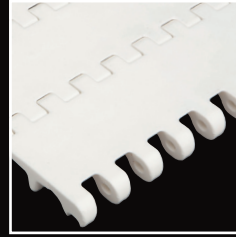
50-801 Open surface for drainage. EASY TO CLEAN for fish industry and other applications requiring drainage.



50-805 Perforated flat top surface with big openings. EASY TO CLEAN food applications requiring drainage.



50-806 Perforated flat top surface. EASY TO CLEAN food applications requiring drainage.



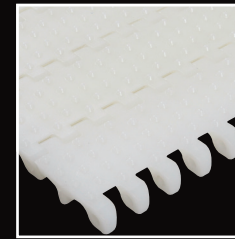
50-808 Flat top closed surface. EASY TO CLEAN food applications.



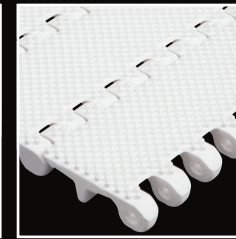
50-808F Closed friction top surface. EASY TO CLEAN Transport on slightly inclined conveyors.



50-808 FlexiTop. A solid 2-component moulding with superior cut and impact resistance. For the red meat industry.



50-830 Closed nub top surface. EASY TO CLEAN food applications.

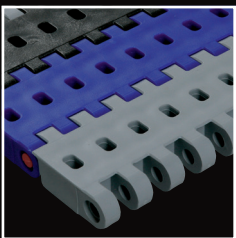


50-838 Closed nub top surface for minimum contact. EASY TO CLEAN for sweets and sticky products.

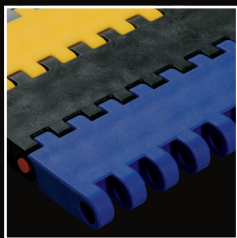
- 50 mm "EASY TO CLEAN" series for super high degree of cleanliness
- Even lines on the back side ensure uninterrupted flow of cleaning fluids
- Conical link design maximizes the access for cleaning around the hinge area
- Red meat, poultry and fishing industry: trimming, cutting and boning lines
- Variety of surfaces: flat, perforated flat top and different nub top patterns
- Available with ScanBelt's unique, revolutionary self-lock, one piece rod retention system



S.50/906/908/918/930/938



50-906 Perforated flat top surface. Heavy duty transport requiring drainage, i.e. water test lines.

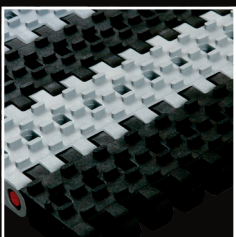


50-908 Flat top closed surface. Heavy duty transport. Car and people movers.



50-918 Structured closed surface. Heavy duty transport. Car and people movers.

- Strongest 50 mm belt in the entire market
- Designed for heavy duty automotive applications, pallet handling, wood and furniture industry
- Special 80 mm moulded-to-width skid belt for transporting car bodies
- Variety of surfaces and openings: flat, perforated flat top; both with and without non-skid patterns



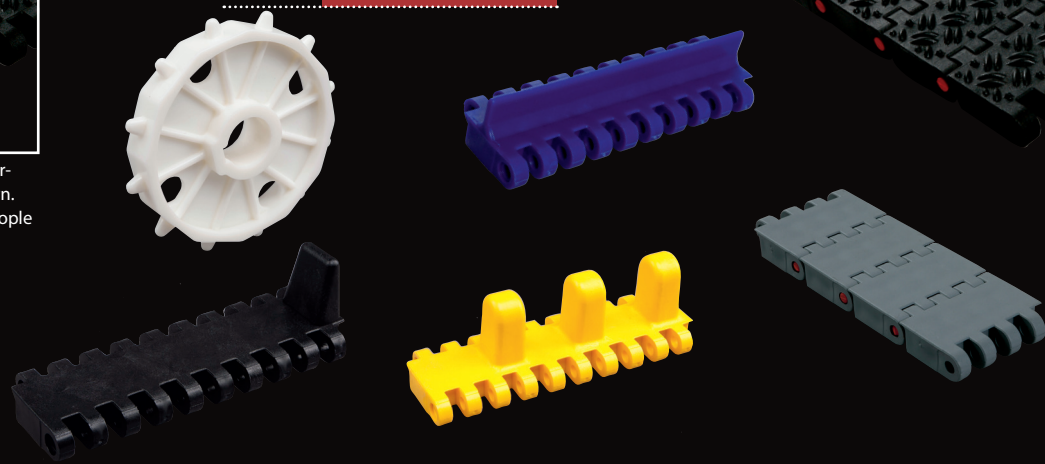
50-930 Perforated flat top surface with 3 mm staggered flight pattern. Heavy duty transport requiring drainage.



50-938 Flat top closed surface with non-skid pattern. Heavy duty transport. People movers.

ACCESSORIES

FOR TECHNICAL DETAILS PLEASE VISIT:
WWW.SCANBELT.COM



S.75

The S.75 series is a range of 75 mm belts designed for super-heavy transport. The series consists of 2 types of belts with different surface structures. Accessories include comb flights and side guards. Effective sprocket systems with side guiding. Fully bi-directional sprockets for reversing belts. The high pulling force in the series makes it ideal for car and pallet handling.

S.75-908/S.75-938



75-908 Flat top closed surface. Super heavy-duty transport. Car and people movers.



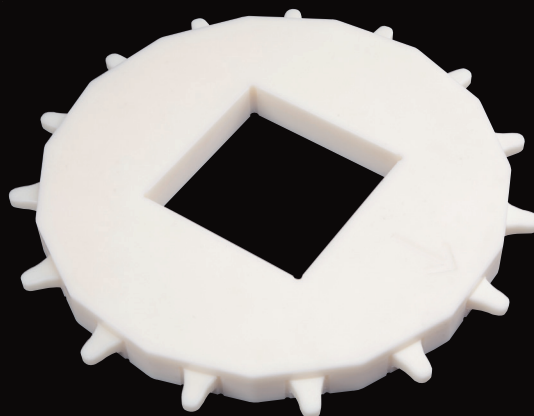
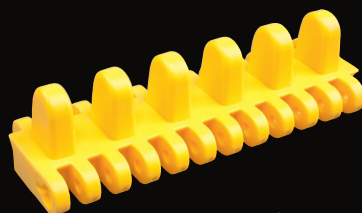
75-938 Flat top closed surface with non-skid pattern. Super heavy-duty transport. Car and people movers.

- Strongest modular belt in the entire market
- Designed for heavy-duty applications
- Moulded-to-width 100 mm, 200 mm and 300 mm skid belt for moving car bodies
- Variety of surfaces both with and without non-skid patterns



ACCESSORIES

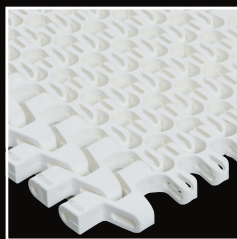
FOR TECHNICAL DETAILS PLEASE VISIT:
WWW.SCANBELT.COM



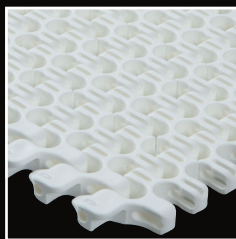
RADIUS BELTS

25 years in spiral and radius belt business has resulted in a range of 25 and 50 mm pitch belts going in curves. Belts suitable for both J-curves and S-curves are available. The 25 mm range has a market low collapse factor (from 1,5:1 x belt width) without compromising the pulling force and product placement. Side guards, line separators, friction top and hold-downs/hooks are all available in this range. The 50 mm series is widely used in heavy duty spirals. The reinforced outer links gives a very high pulling force without any steel-to-steel contact.

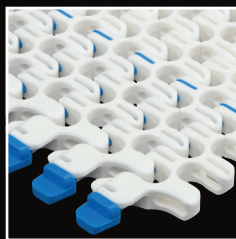
S.100R/S.101/S.101TAB/J.101/S.101Track



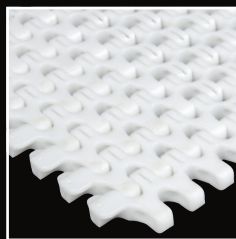
S.100R Open radius belt with heavy outer links on both sides. Steel reinforcements or moulded-in side guards can be supplied.



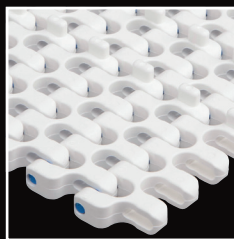
S.101 Open radius belt with a very low collapse factor. Can run in S- and J-curves for spiral coolers/freezers.



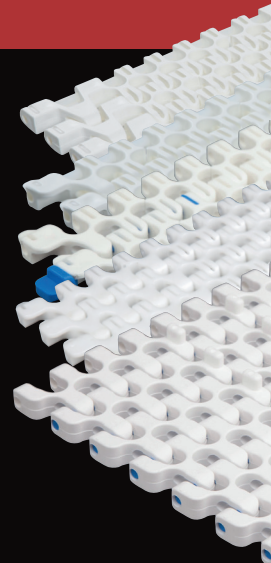
S.101TAB Open radius belt with a very low collapse factor. Can run in S- and J-curves for normal radius applications.



J.101 Open radius belt with a very low collapse factor. Can run in J-curves only for spiral coolers/freezers as well as normal radius applications.



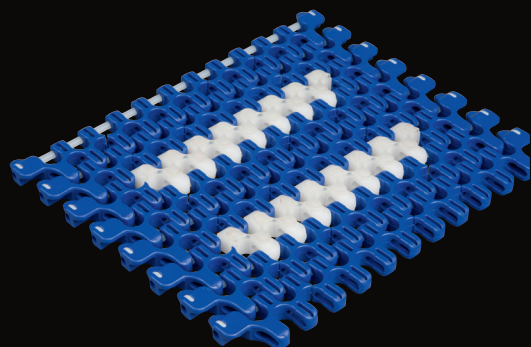
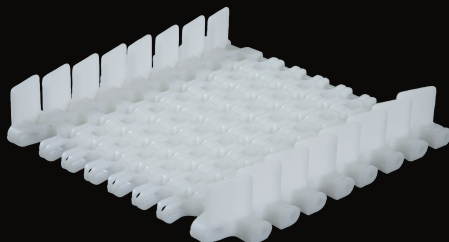
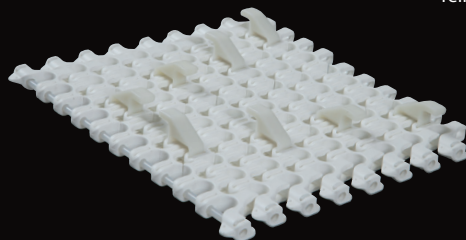
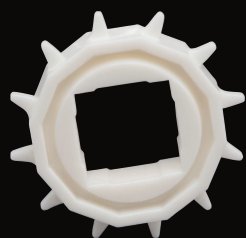
S.101Track Open radius belt with a very low collapse factor. Comes with integrated tracks underneath for easy guiding. Ideal for trays, boxes in the food industry.



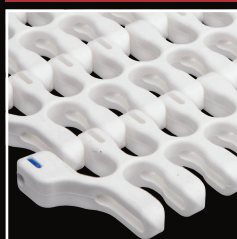
ACCESSORIES

FOR TECHNICAL DETAILS PLEASE VISIT:
WWW.SCANBELT.COM

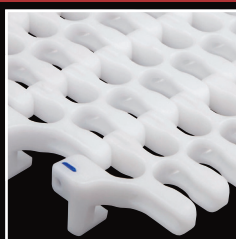
- Collapse factor starting from 1,5 x belt width
- Designed for spiral coolers/freezers
- References dating back to 1988 for ScanBelt radius belts
- Both S-curves and J-curves
- Varied accessories, such as high friction, side guards and steel reinforcements



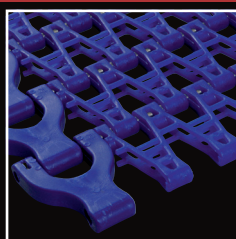
S.201/S.201Hook/J.450



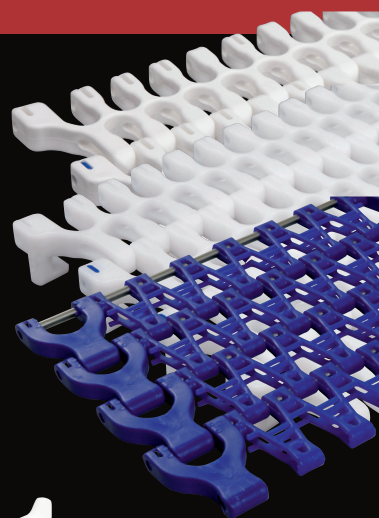
S.201 Open radius belt with a very low collapse factor. Can run in S- and J-curves for spiral coolers/freezers as well as normal radius applications.



S.201Hook Open radius belt with a very low collapse factor. Can run in S- and J-curves for spiral coolers/freezers as well as normal radius applications.

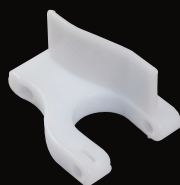


J.450 Very open radius belt with heavy duty outer link. For longer spirals. Runs in J-curves only.



ACCESSORIES

FOR TECHNICAL DETAILS PLEASE VISIT:
WWW.SCANBELT.COM





STANDARD MATERIALS

All belts from ScanBelt are naturally available in the traditional materials; Polyethylene (PE), Polypropylene (PP) and Polyacetal (POM). All standard materials are FDA approved for direct food contact.

Polyethylene can handle operational temperatures down to -73°C and is thus suitable for installations in cold areas. It will also be ideal for applications that require a flexible belt material with superior impact strength.

Polypropylene can handle operational temperatures up to 100°C . It is a harder material with a good pulling force. It is suitable for installations in high range temperature areas as well as boilers and dryers to a certain degree. It has excellent chemical resistance towards aggressive cleaning chemicals etc.

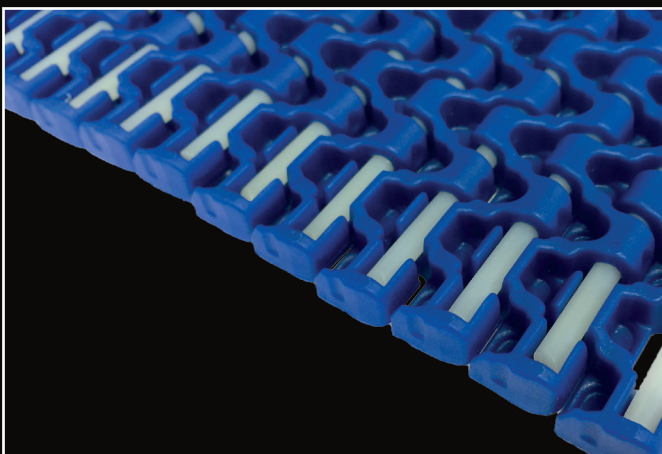
Polyacetal is a strong all-round material with a working temperature from $+43^{\circ}$ to $+95^{\circ}$. This material has great pulling force and a hard surface, which gives a reduced friction to both the support and the product. It is sensitive to blows or knocks due to low impact strength. Suitable for bottling and canning industry. Should be used with caution in installations that use cleaning agents containing acid and/or chlorine.

LOCKING SYSTEMS

ScanBelt modular belts are available with a number of different rod retention systems.

Some belts are available with our unique, revolutionary self-lock, one piece rod retention system that makes disassembly an easy task, and the pins are reusable (see photo).

With the improved pin retention system, both assembly and disassembly are simplified. In addition, the hygiene properties are greatly improved.



SPECIAL MATERIALS

In order to solve tasks out of the ordinary, we are able to deliver a variety of special materials as well as additives.

High Temperature Areas

For cookers, steamers and air dryers etc. it will be an advantage to use a temperature stabilised polypropylene material that is not affected by a constant high temperature.

For blanchers and pasteurizers etc., where the belt's thermal expansion may be an issue, we supply belts in **COMPOSITE MATERIAL**. This reduces the thermal expansion coefficient by approx. 75% from normal polypropylene. It furthermore has an excellent chemical resistance and will help dissipate static charges that might build up in certain applications.

Nylon

Nylon can be used in both warm and cold areas as it handles temperatures ranging from -45° to 160° (depending on the choice of nylon). It is a soft material with a good pulling force. It has a high impact strength as well as a decent chemical resistance. Density ranges from 1.08 to 1.37. We use standard Nylon, Nylon 6 glass-reinforced, Nylon 6.6, Nylon 6.6 glass-reinforced, Akulon Nylon. The Nylon 6 types are FDA approved. Note that not all our belt types are offered in Nylon.

Reinforced Materials

In areas with distinct necessity for added pulling force, we can supply either fibre or mineral reinforced materials. These will significantly improve the pulling force, but at the same time lower the impact strength.

Electrical Conductivity

Most materials can be delivered either as electrically conductive or antistatic. The electrical conductivity can be varied to suit your requirements.

Non-stick

There is often a need for "non-stick" effect particularly for freezing applications, where it is necessary to avoid the products sticking to the belt surface. For this purpose we deliver polyethylene in a non-stick version.

Detectable Polypropylene

The material is highly relevant in food applications where there is a risk of contamination. The compound is designed to be detected by metal detectors and X-ray machines. Sensibility degrees may vary with customer's equipment. The material complies with FDA regulations for use in food processing and packaging.

Flame Retardant Materials

For use in fire hazardous areas, we can supply V-0 rated materials that will not sustain a flame or burn actively. The material is FDA approved for direct food contact.

Other special materials are available, please visit www.scanbelt.com



Efficiency ▶ Experience ▶ Excellence

Keeping global industries moving for more than 25 years

SCANBELT
...keeping industry moving...

Læsøvej 12 • DK-9800 Hjørring
Tlf. +45 98 90 90 88 • Fax +45 98 90 96 06
www.scanbelt.com • mail@scanbelt.com

