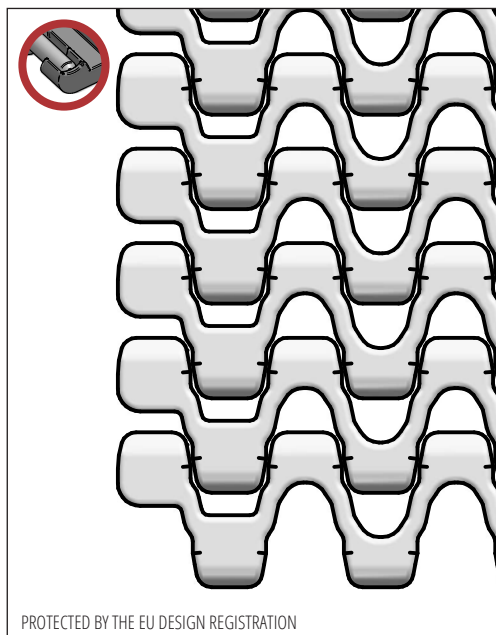


S.12-401

Ideal choice for light transportation.
Cooling belt for small nose bars, down to 14 mm.
FDA approved



SUGGESTED INDUSTRIES



STANDARD FEATURES

Belt surface	Open belt with a smooth surface
Open area	40 %. Biggest opening 6 x 8 mm
Strength	Ideal choice for light transportation
Cleanability	Excellent. FSIS
Standard width	Increments of 20 mm, e.g. 100, 120 mm etc.

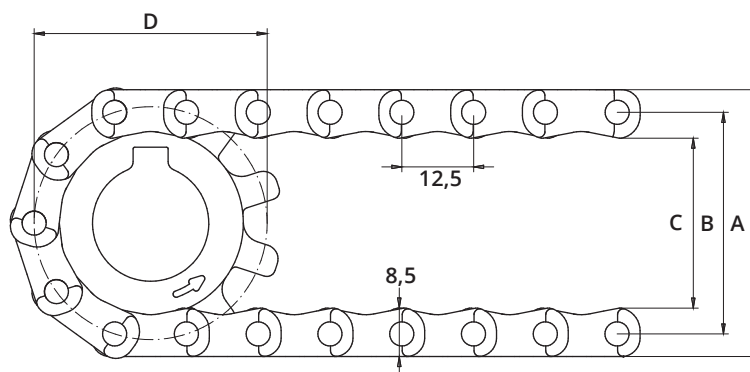
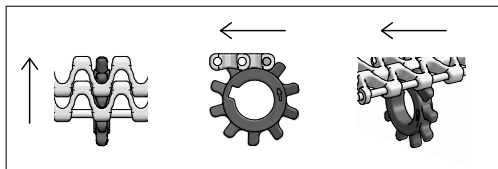
BELT DATA

Belt materials	Temperature range		Max. belt pull kg/m of width	Belt weight kg/m ²	Belt weight kg/m ² w. steel rods	Standard Colours
	Min.	Max.				
PE	- 73	66	600	3,5	11	Blue/Natural
PP	+ 5	100	800	3,5	11	Blue/White/Grey
POM	- 43	95	1450	4,8	12	Blue/Natural

ACCESSORIES

Type	mm
Flights	25
Scoop Flights	-
Bent Flights	-
Supported Flights	-
Flights fitted with a Round Top	Yes
Side Guards	-
Friction Top	Yes
Hold-downs	-

SPROCKET ENGAGEMENT



SPROCKET DATA

A = Outside, B = Pitch, C = Inside, D = Pitch Circle Diameter

No. Teeth	A	B	C	D	Hub Width	Round Bore		Square Bore	
	mm	mm	mm	mm		mm	Inch	mm	Inch
10	47	38	30	41	8	20	3/4		
19	82	73	65	76	12	20 / 25 / 30 / 40	1	25/40	1 1/2
24	102	93	85	96	12	20 / 25 / 30 / 40	1	25/40	1 1/2
28	122	113	105	115	12	20 / 25 / 30 / 40	1	25/40	1 1/2