

MODULAR BELTS

HEAVY-DUTY AUTOMOTIVE INDUSTRY



SCANBELT
...keeping industry moving...

Strongest modular conveyor belts with the highest contact/sliding area and hence the lowest specific pressure in the market...





BODY SHOP WITH SKID CONVEYOR

Equipped with ScanBelt heavy-duty modular belts, the skid conveyors can be used for loading areas, buffer lines, body shop, paint shop and final assembly operations. Modular skid conveyors increase the reliability of the line, reduce maintenance and unscheduled downtimes as the belt can easily be maintained by replacing the damaged modules without the use of complicated tools.

- Time and cost saving due to easy installation
- Cost efficient and simple system design
- No tension system required
- Reduced load and wear on ball bearings



FINAL ASSEMBLY - PEOPLE MOVERS

ScanBelt heavy-duty modular belts are ideal for moving operators working at the final assembly and pre-call lines. The people movers ensure efficient and smooth transport of the operators while providing a sturdy and secure platform. A working area with non-skid surface allows the operators to move safely around even on a wet surface.

- Low energy consumption due to low friction coefficient
- Belts can be equipped with yellow safety outer edges
- Non-skid surface patterns
- Anti-static and electrically conductive materials available



CAR & PEOPLE MOVERS

For moving people and vehicles in the final stages of assembly and quality control, ScanBelt heavy-duty modular belts are ideal. The conveyor for moving people and vehicles ensures efficient and smooth transport of the operators while providing a sturdy and secure platform. A working surface with non-skid pattern allows the operators to move safely around even on a wet surface.

- Low energy consumption due to low friction coefficient
- Belts can be equipped with yellow safety outer edges
- Non-skid surface patterns
- Anti-static and electrically conductive materials available



WATER TEST LINES

A ScanBelt heavy-duty modular belt is an optimal solution for designing water test lines. The belts are not influenced by humidity and provide the necessary drainage. Different belt surfaces and drainage capacities are available providing a safe conveying surface.

- No dimensional changes due to water absorption
- No corrosion
- Optimal water drainage
- Non-skid surface patterns



PUBLIC CAR WASHING LINES

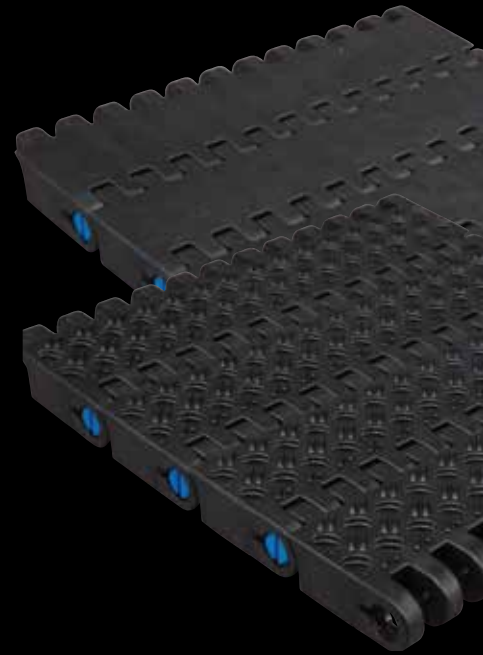
ScanBelt heavy-duty modular belts are perfect for public car washing and cleaning lines. They are easy to install in all established pit depths and dimensions.

- No lubrication required
- Low noise level
- Applicable for all cars and tyre dimensions - even lowered cars
- Optimal rim protection due to plastic side guards and car pushers
- Flexible placement of the car pushers
- Small sprocket dimensions for shallow pits

BENEFITS

SCANBELT - KEEPING INDUSTRY MOVING...

- Maintenance free - minimum downtime
- Easy assembly and disassembly
- Energy saving due to low friction and low belt weight
- Less spare parts required since standard components are used
- High versatility due to the modular concept
- Fully bi-directional sprocket design
- Superior sprocket engagement and belt support
- Extremely high pulling force
- Sturdy module and rod design
- Abrasion and distortion resistant
- A wide range of openings and surfaces both with and without non-skid patterns
- A wide variety of accessories such as car pushers, side guards and effective sprocket system with side guiding



EASY ASSEMBLY / DISASSEMBLY



Insert a plate underneath to lift the belt out of the frame and make the twist lock accessible. Fix the belt before and after the point where it is to be opened in order to avoid have the whole belt slide away.

1



Use a slotted screwdriver. Turn the clip counterclockwise with the screwdriver until the slot is horizontal. Place the screwdriver behind the clip and press it out.

2



Use a hammer and a drift (Ø8 mm to Ø10 mm, minimum 100 mm long). Knock the rod out and open the belt.

3

MATERIALS

- The correct choice of belt materials is essential for a successful and sustainable conveyor
- Numerous materials for all applications that meet the requirements in the industry are available

PP Anti-static

POM Electrically conductive

POM ESD, electro static discharge

POM Anti-static

Fire retardant material (B1) - certified

- Available with plastic or stainless steel rods
- Wear resistant sprocket materials are used
- A wide variety of colours are available



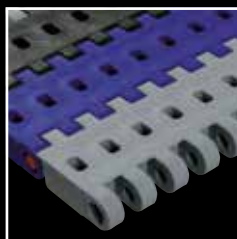
**FLEXIBILITY
ABOVE ALL...**



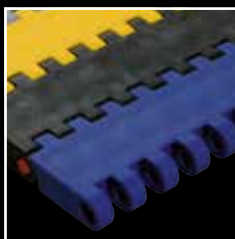
S.50 SERIES

The S.50-9xx series is a range of 50 mm pitch belts designed for heavy-duty transport with different surface structures and openings. Accessories, such as car pushers and side guards, are available. Effective sprocket system with lateral guiding and superior belt support. Fully bi-directional sprocket design.

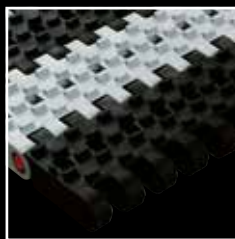
S.50/906/908/930/938



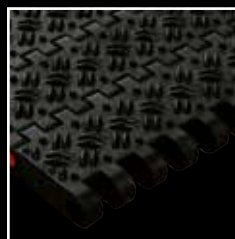
50-906 Perforated flat top surface. Heavy-duty transport requiring drainage, i.e. water test lines.



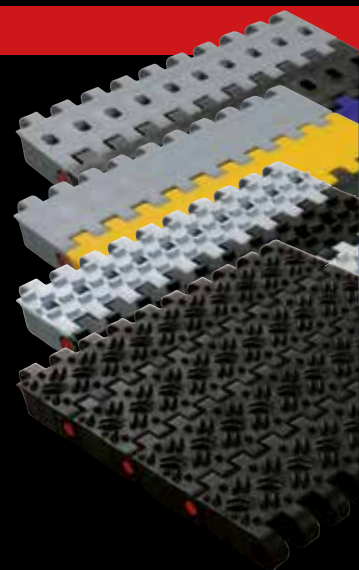
50-908 Flat top closed surface. Heavy-duty transport. Car and people movers.



50-930 Perforated flat top surface with 3 mm staggered flight pattern. Heavy-duty transport requiring drainage.

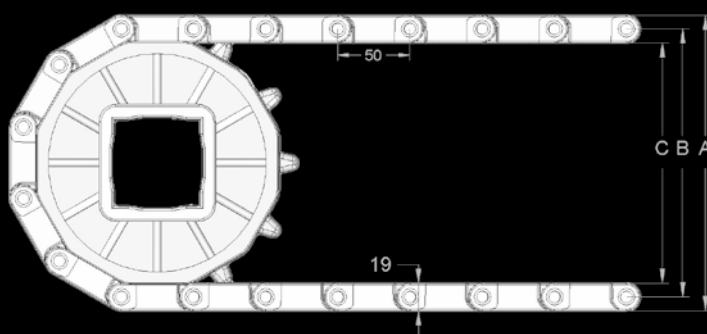


50-938 Flat top closed surface with 3 mm non-skid pattern. Heavy-duty transport. People movers.



- Strongest 50 mm pitch belt in the entire market
- Designed for heavy-duty applications
- Moulded-to-width 80 mm and 200 mm skid belt for moving car bodies
- Variety of surfaces and openings both with and without non-skid patterns

Belt data		
Materials	Max. belt pull kg/m of width	Belt weight kg/m ² plastic/steel rod
Polyethylene (PE)	4.800	14/20
Polypropylene (PP)	6.000	14/20
Polyacetal (POM)	10.250	21/27



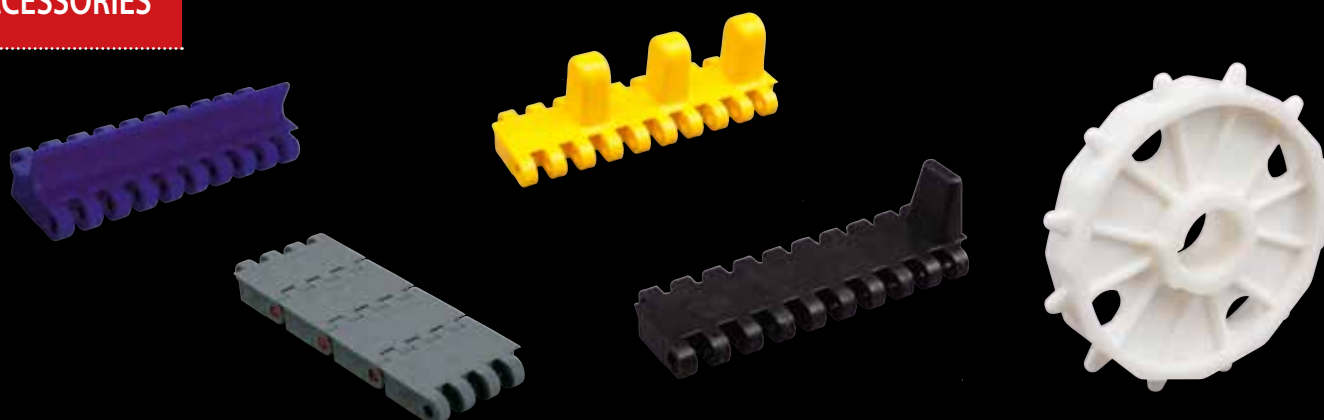
Sprocket Data						
No. of teeth	A= Outside diameter (mm)	B= Pitch diameter (mm)	C= Inside diameter (mm)	Hub width (mm)	Round bore (mm)	Square bore (mm)
12	213	194	174	40	40/60	60/80/90
16	278	259	240	40	40/60	60/80/90
18	310	291	271	40	40/60	60/80/90

Other sizes and bores available upon request. Split and drum motor sprockets can also be offered.

ACCESSORIES

FOR TECHNICAL DETAILS PLEASE VISIT:

WWW.SCANBELT.COM



S.75 SERIES

The S.75-9xx series is a range of 75 mm pitch belts designed for super-heavy transport. The series consists of 2 types of belts with different surface structures. Accessories include car pushers and side guards. Effective sprocket system with lateral guiding and superior belt support. Fully bi-directional sprocket design.

S.75-908/S.75-938



75-908 Flat top closed surface. Super-heavy-duty transport. Car and people movers.

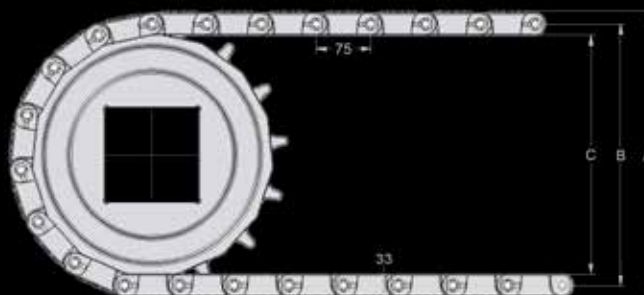


75-938 Flat top closed surface with 3 mm non-skid pattern. Super-heavy-duty transport. Car and people movers.



- Strongest modular belt in the entire market
- Designed for heavy-duty applications
- Moulded-to-width 100 mm, 200 mm and 300 mm skid belt for moving car bodies
- Variety of surfaces both with and without non-skid patterns

Belt data		
Materials	Max. belt pull kg/m of width	Belt weight kg/m ² plastic/steel rod
Polypropylene (PP)	10.000	22/30
Polyacetal (POM)	16.000	33/41

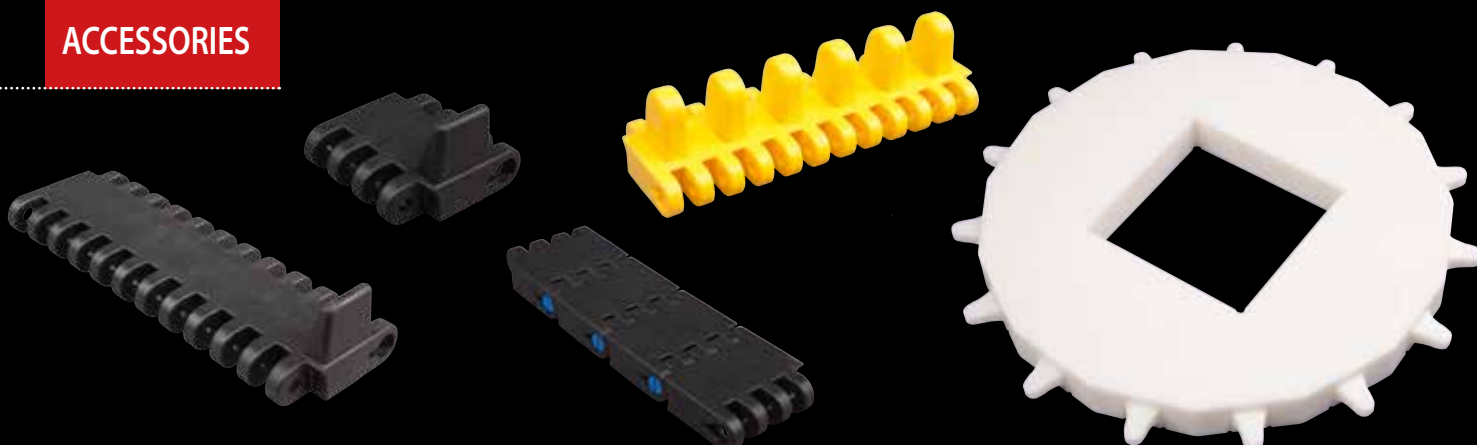


Sprocket Data						
No. of teeth	A= Outside diameter (mm)	B= Pitch diameter (mm)	C= Inside diameter (mm)	Hub width (mm)	Round bore (mm)	Square bore (mm)
12	320	290	258	40	40/60	60/80/90

Other sizes and bores available upon request. Split and drum motor sprockets can also be offered.

ACCESSORIES

FOR TECHNICAL DETAILS PLEASE VISIT:
WWW.SCANBELT.COM





Efficiency ▶ Experience ▶ Excellence

More than 25 years of experience in the automotive industry

Supplier to major car manufacturers worldwide

SCANBELT
...keeping industry moving...

Læsøvej 12 • DK-9800 Hjørring
Tlf. +45 98 90 90 88 • Fax +45 98 90 96 06
www.scanbelt.com • mail@scanbelt.com