

Technical Datasheet

Article Number

PDR-AT40 DB

PDR-AT40 DB is a FDA, EC10/2011 and USDA approved positively driven belt, reinforced with aramid tensile members. The belt does not fray and has minimal stretch, which reduces maintenance and increases belt life.

Technical Data	
Material	TPU (Polyether)
Anti-hydrolysis	✓
Anti-microbial	✓
Color	Dark Blue
Base Belt Thickness	3.6 mm
Total Belt Thickness	10 mm
Profile	Matt
Tensile Strength	16 N/mm
Min. Pulley Ø	125 mm
Available Sprockets	10, 12, 14, 16
Aramid Cords Spacing	≈ 10 mm
Temperature Range	-30°C to +100°C
Weight	4.3 kg/m ²
Coefficient of Friction (Steel)	
wet	0.6 ~ 0.8
dry	0.4 ~ 0.6
Hardness (Shore A)	95

Installation

The belt is intended to run without tension. In case of tensioning, install the slack belt and tension until running smoothly. Do not tension more than 0.1%.

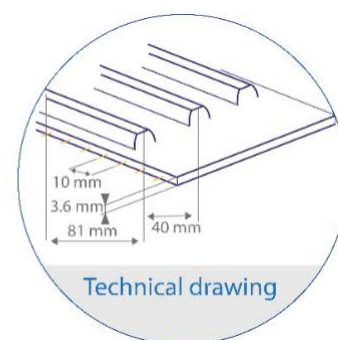
Production Data	
Standard Length	60 m
Max. Width	1,420 mm
Certification	
FDA	✓
USDA	✓
EU 10/2011	✓

Accessories available

Cleats	High frequency
Sidewalls	High frequency; hot air
V-guides	High frequency; hot air
Joining Method	Butt Joint

Properties

Trough suitable	✓
Flat Conveyor	-
Positive Drive	✓
Wet (Hot and Cold)	✓
Environment	✓
Oily Environment	✓
Extreme Temp.	✓
Heavy Duty	-



The information provided in this datasheet contains a general description of the performance characteristics of the products concerned. The actual products may not always have these characteristics as described and in particular, these may change as a result of further developments of the products. The provision of this information is not intended to have and will not have legal effect. An obligation to deliver products having particular characteristics shall only exist if expressed and agreed upon in the terms of the contract.

Sprocket Datasheet

Article Number

PDR-AT40 SP

Technical Data		Applicable Belt Material at Temperature								
Sprocket Sizing		<0°C			0°C - 12°C			>12°C		
Number of Teeth	OD (mm)	SB/W	DB	DB LT	SB/W	DB	DB LT	SB/W	DB	DB LT
10	125	◇	◇	◆	◇	❖	◆	❖	◆	◆
12	152	◇	❖	◆	◇	❖	◆	❖	◆	◆
14	176	◇	❖	◆	❖	◆	◆	◆	◆	◆
16	203	❖	◆	◆	◆	◆	◆	◆	◆	◆

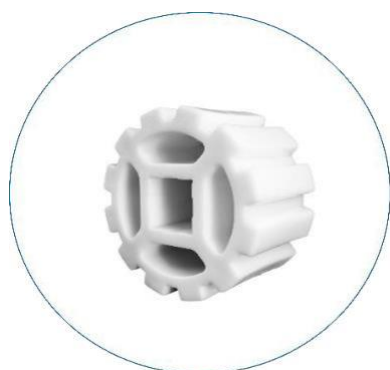
◇	Not suitable	❖	Suitable	◆	Recommended
---	--------------	---	----------	---	-------------

Sprocket Placement

REO-AT40 belts require one driving sprocket for belt widths up to 800 mm. For belt widths above 800 mm, two driving sprockets will need to be placed. Additionally, supporting wheels are placed every 100 mm and always below the belt edges to ensure a smooth running of the belt.

Sprocket Sizes Depending on Temperature

The working temperature will have an effect on the pulley size of the chosen belt material. Monolithic reinforced belts do get increasingly stiff in cold environments, whereas the polyether-TPU and special low temperature materials can counter this effect. Do consult with us about your application and when intending to run in extreme temperatures, our team will be able to recommend a suitable setup or product for you.



The information provided in this datasheet contains a general description of the performance characteristics of the products concerned. The actual products may not always have these characteristics as described and in particular, these may change as a result of further developments of the products. The provision of this information is not intended to have and will not have legal effect. An obligation to deliver products having particular characteristics shall only exist if expressed and agreed upon in the terms of the contract.

Homogeneous Belts