

S.12-408 F/2

Transport of goods on a slightly inclined Conveyor. Runs on 14 mm nose bar. FDA approved



SCANBELT
...keeping industry moving...

SUGGESTED INDUSTRIES

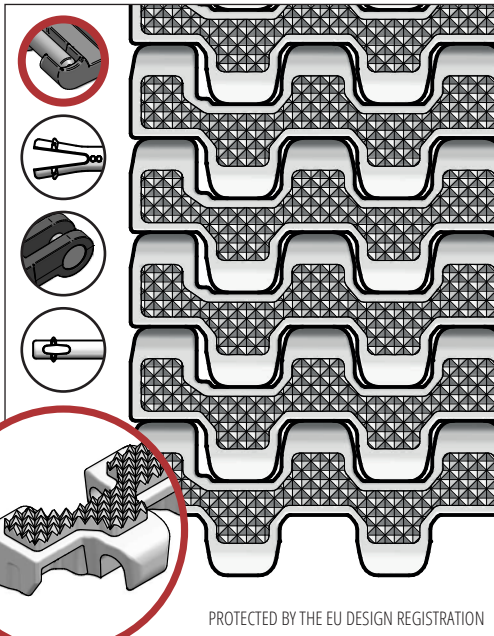


STANDARD FEATURES

Belt surface	Flat top with friction surface
Open area	Closed
Strength	Ideal choice for light transportation
Cleanability	Excellent. FSIS
Standard width	Increments of 40 mm, e.g. 200 mm, 240 mm
Also available as	Module with 20 mm indent

BELT DATA

Belt materials	Temperature range		Max. belt pull kg/m of width	Belt weight kg/m ²	Belt weight kg/m ² w. steel rods	Standard Colours
	Min.	Max.				
PE	-73	66	-	-	-	-
PP	+5	100	-	-	-	-
POM	-43	95	-	-	-	-
Copolymer	-20	66	750	6	13,5	Natural

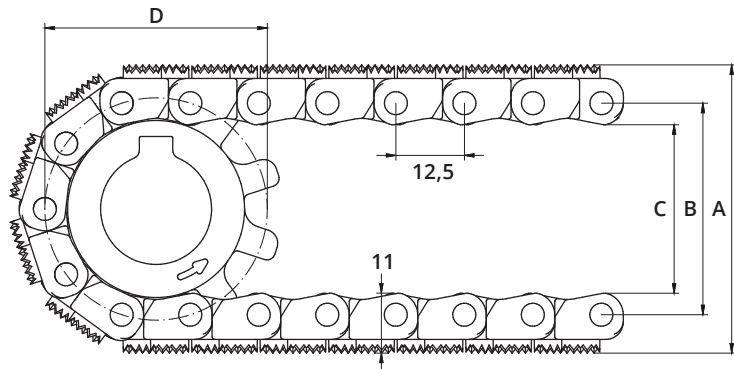
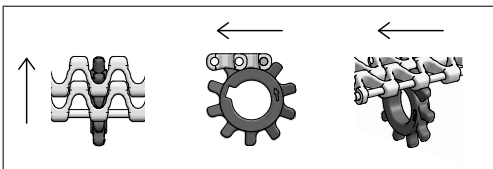


PROTECTED BY THE EU DESIGN REGISTRATION

ACCESSORIES

Type	mm
Flights	25
Scoop Flights	-
Bent Flights	-
Supported Flights	-
Flights fitted with a Round Top	Yes
Side Guards	-
Friction Top	Yes
Hold-downs	-

SPROCKET ENGAGEMENT



SPROCKET DATA

A = Outside, B = Pitch, C = Inside, D = Pitch Circle Diameter

No. Teeth	A	B	C	D	Hub Width	Round Bore		Square Bore	
	mm	mm	mm	mm		mm	Inch	mm	Inch
10	52	38	30	41	8	20	¾		
19	87	73	65	76	12	20 / 25 / 30 / 40	1	25 / 40	1½
24	107	93	85	96	12	20 / 25 / 30 / 40	1	25 / 40	1½
28	127	113	105	115	12	20 / 25 / 30 / 40	1	25 / 40	1½