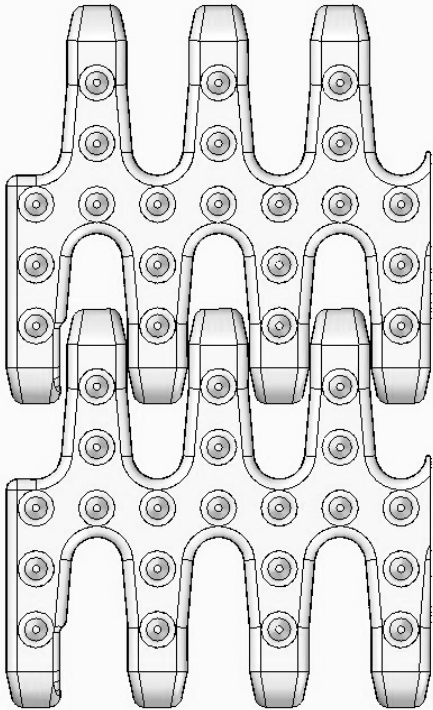


## S. 50-831



Belt data		
Materials	Max. belt pull kg/m of width	Belt weight kg/m <sup>2</sup>
Polyethylene (PE)	1200	7
Polypropylene (PP)	1400	7
Polyacetal (POM)	2060	10

**Belt surface:** Open belt with 3 mm. cone top.  
**Open area:** 24%. Biggest opening 10 x 12 mm  
**Strength:** The right belt for light to medium transportation.  
**Material/colour:** PE/nat and blue, PP/white and POM/blue.  
**Cleanability:** Excellent. FSIS.  
**Accessories:** 25, 50, 75 and 100 mm flights. 75 and 150 mm supported flights. Scoop and bent flights. 50, 75, 100 and 150 mm side guards. Hold-down. Flights fitted with a round top.

**Application:** Light to medium transportation, Red meat, poultry, seafood and transportation of raw materials (for further processing).

**Standard widths:** Increments of 20 mm, e.g. 100, 120 mm etc

Sprocket Data								
No. of teeth	A= Outside diameter	B= Pitch-diameter	C= Inside-diameter	Hub width:	Round bore		Square bore	
					mm	in.	mm	in.
6	111	89	73	20	20/25/30/40	¾/1/1¼	25 /40	1½
8	144	122	106	35	25/30/40	1/1¼	25/40	1½
10	178	156	140	35	25/30/40/50/60	1/1¼	25/40/60	1½/2½
12	211	189	173	35	25/30/40/50/60	1/1¼	25/40/60	1½/2½

