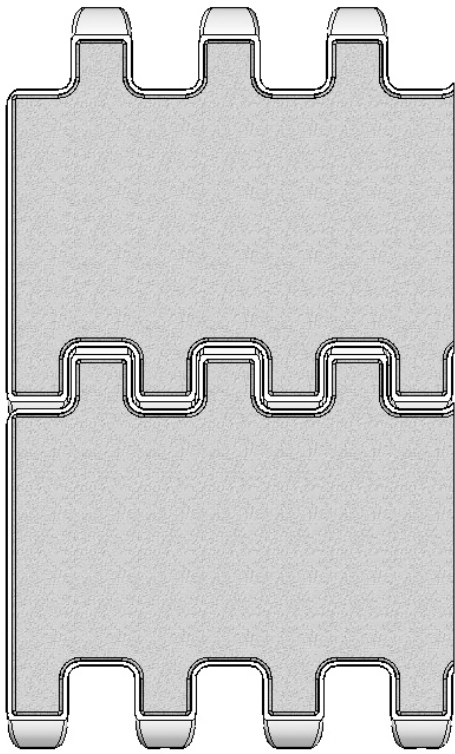


S. 50-808 FT - FlexiTop



Belt data		
Materials	Max. belt pull kg/m of width	Belt weight kg/m ²
Polyacetal (NYLON)	2200	12

Belt surface: Closed flat top belt.
 Open area: Closed.
 Strength: The right belt for medium-heavy transportation.
 Material/colour: NYL/nat.
 Cleanability: Excellent.
 Accessories: None
 Application: Cutting/trimming belt with an improved cut – and impact resistance for the meat industry
 Standard widths: Increments of 20 mm, e.g. 100, 120 mm etc.

Protected by the EU Design Registration

Sprocket Data								
No. of teeth	A= Outside diameter	B= Pitch-diameter	C= Inside-diameter	Hub width:	Round bore		Square bore	
					mm	in.	mm	in.
6	108	89	73	20	20/25/30/40	¾/1/1¼	25 /40	1½
8	142	122	106	35	25/30/40	1/1¼	25/40	1½
10	177	156	140	35	25/30/40	1/1¼	25/40/60	1½/2½
12	211	189	173	35	25/30/40/50/60	1/1¼	25/40/60	1½/2½

