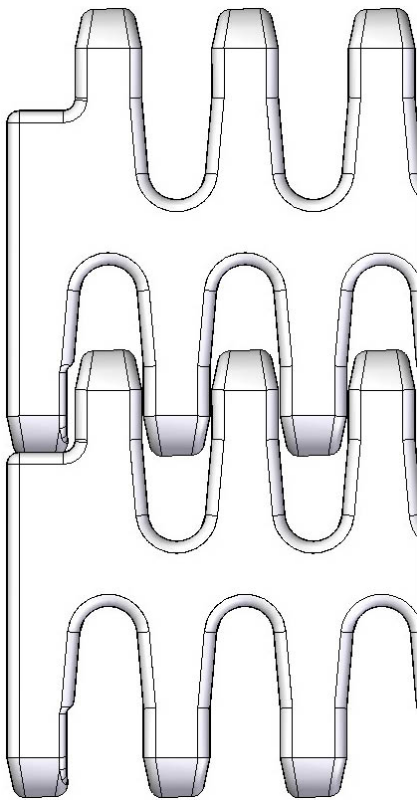


S. 50-801



Belt data		
Materials	Max. belt pull kg/m of width	Belt weight kg/m ²
Polyethylene (PE)	1200	7
Polypropylene (PP)	1400	7
Polyacetal (POM)	2060	10

Belt surface: Open belt with a smooth surface
 Open area: 24%. Biggest opening 10 x 12 mm
 Strength: The right belt for medium-heavy transportation.
 Material/colour: PE/nat and blue, PP/white and grey. POM/blue.
 Cleanability: Excellent. FSIS.
 Accessories: 25, 50, 75 and 100 mm flights. 75 and 150 mm supported flights. Scoop and bent flights. 50, 75, 100 and 150 mm side guards. Hold-down. Flights fitted with a round top.

Application: Medium-heavy duty transportation, Red meat, poultry, seafood and transportation of raw materials (for further processing).
 Increments of 20 mm, e.g. 100, 120 mm etc

Standard widths:

Sprocket Data								
No. of teeth	A= Outside diameter	B= Pitch-diameter	C= Inside-diameter	Hub width:	Round bore		Square bore	
					mm	in.	mm	in.
6	102	89	73	20	20/25/30/40	¾/1/1¼	25 /40	1½
8	136	122	106	35	25/30/40	1/1¼	25/40	1½
10	171	156	140	35	25/30/40	1/1¼	25/40/60	1½/2½
12	203	189	173	35	25/30/40/50/60	1/1¼	25/40/60	1½/2½

