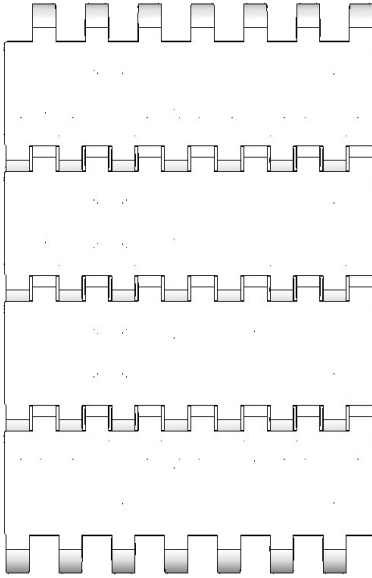


## S. 25-408



Belt data		
Materials	Max. belt pull kg/m of width	Belt weight kg/m <sup>2</sup>
Polyethylene (PE)	900	6
Polypropylene (PP)	1250	6
Polyacetal (POM)	2400	8,5

**Belt surface:** Flat top.  
**Open area:** Closed.  
**Strength:** Strongest belt in the S.25 series. Ideal for medium weight transportation.  
**Material/colour:** PE/nat and blue, PP/white and grey. POM/blue  
**Cleanability:** Good.FSIS  
**Accessories:** 3, 25 and 50 mm flights, 25 and 50 mm side guards. 25 and 50 mm friction flights.  
**Application:** Transport of small products such as machine components. Vulcanising belt for the rubber industry.

**Standard widths:** Increments of 10 mm, e.g. 100, 110 mm etc

Protected by the EU Design Registration

Sprocket Data								
No. of teeth	A= Outside diameter	B= Pitch diameter	C= Inside diameter	Hub width:	Round bore		Square bore	
					mm	in.	mm	in.
6	54	45	36	20	20			
8	70	61	52	20	20/25	1	25	
12	104	95	86	20	20/25/30/40	1/1¼	25/40	1½
20	169	160	151	35	25/30/40	1/1¼	25/40/60	1½/2½

